

PIVOT SWING DOOR

www.eswindows.com

ES-PSD5030T



System description

- Pivot door system.
- Frame depth: 5".
- Impact door.
- Treshold ADA.
- Desing for multiple options of glass and panel phenolic.

Features

- Thermal break system for improved performance and insulation.
- Multipoint lock.
- Available in multiple finishes, anodized, painted or with wood grain.

Test

- Design load: +/-95 psf.

Configurations



Phenolic panel door



Glass door

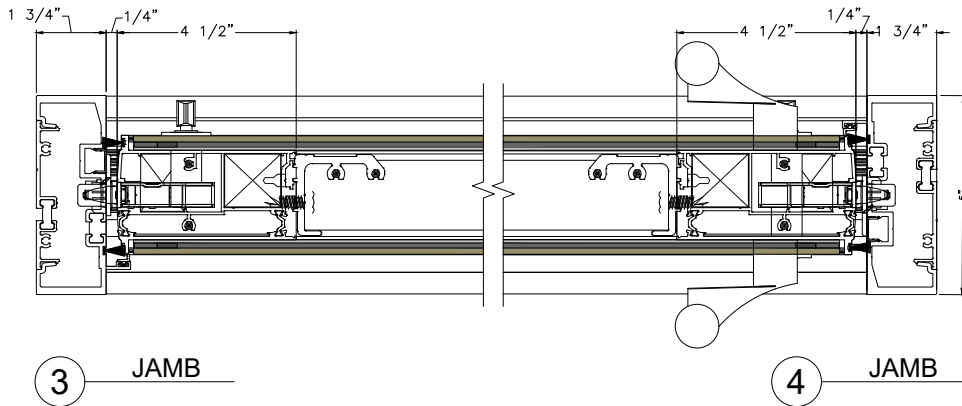
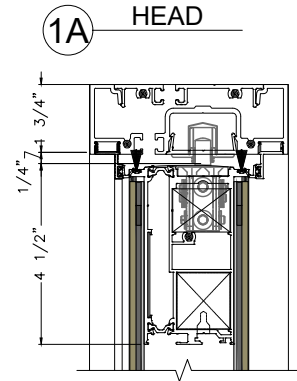
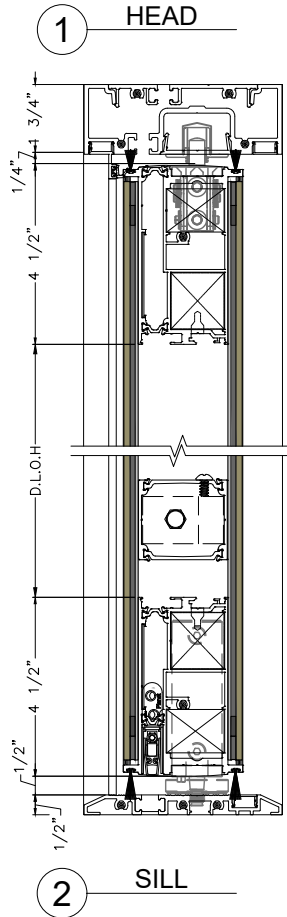
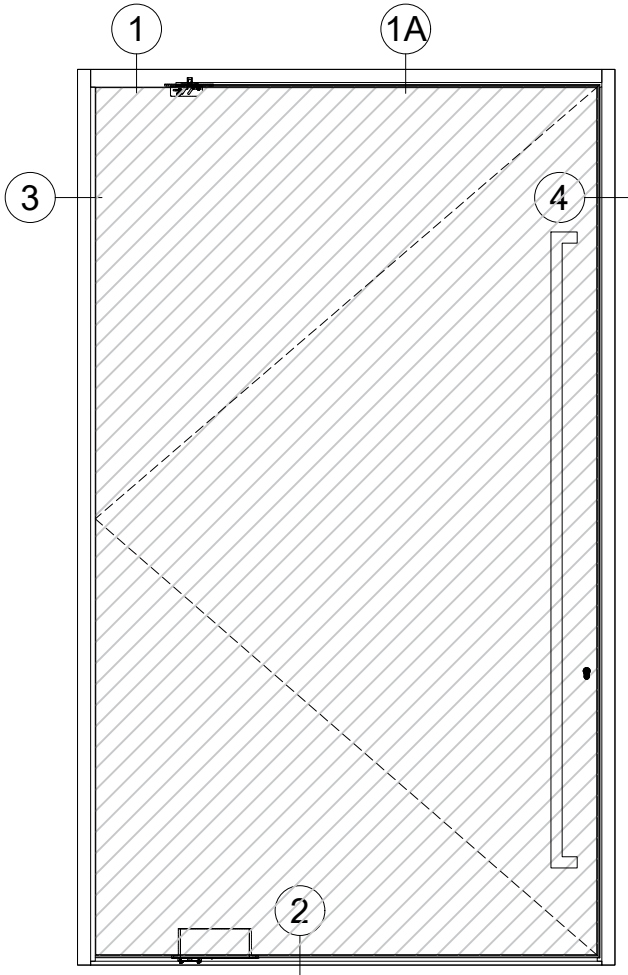
Available finishes

The photographs below provide an indication of the finishes; actual finishes may differ slightly. Availability may vary according to location and/or project specifics.

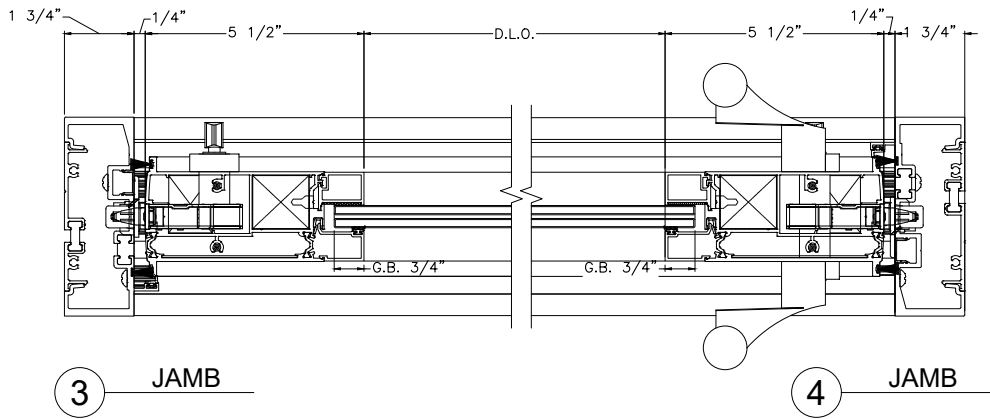
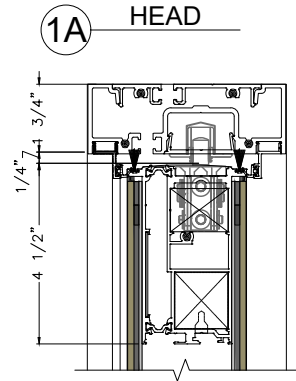
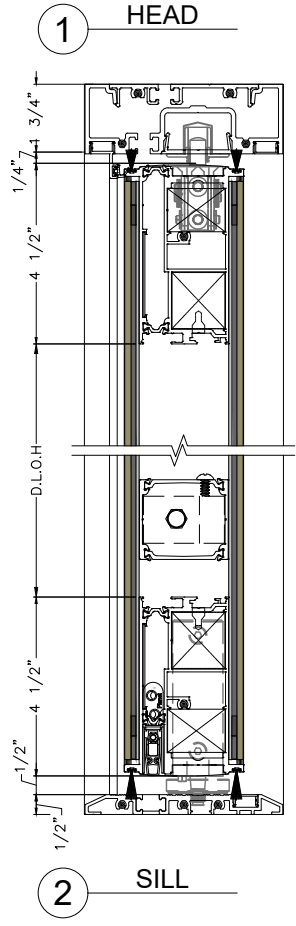
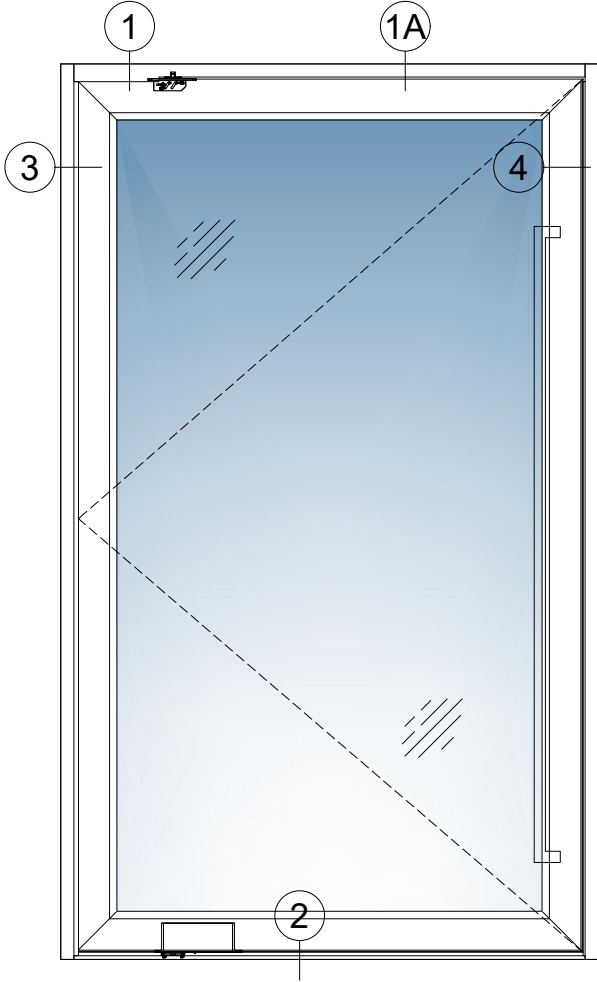
Contact **ESWINDOWS** for details on each finish available for your project.



System details



System details



SWING DOOR

www.eswindows.com

ES-PSD5030T (FRENCH DOOR)



System description

- Swing door system.
- Frame depth: 5".
- Impact door.
- Treshold ADA.
- Desing for multiple options of glass and phenolic panels.

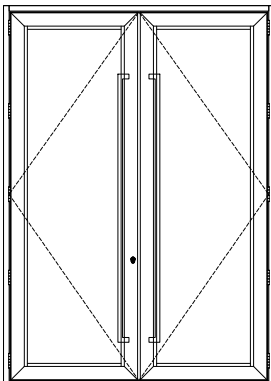
Features

- Thermal break system for improved performance and insulation.
- Multipoint lock.
- Available in multiple finishes, anodized, painted or with wood grain.

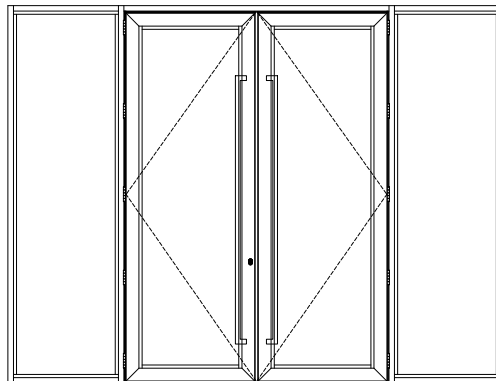
Test

- Design load: +/-95 psf.

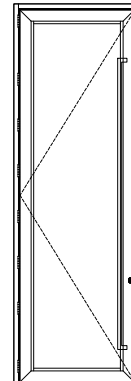
Configurations



Double



Double with
sidelites

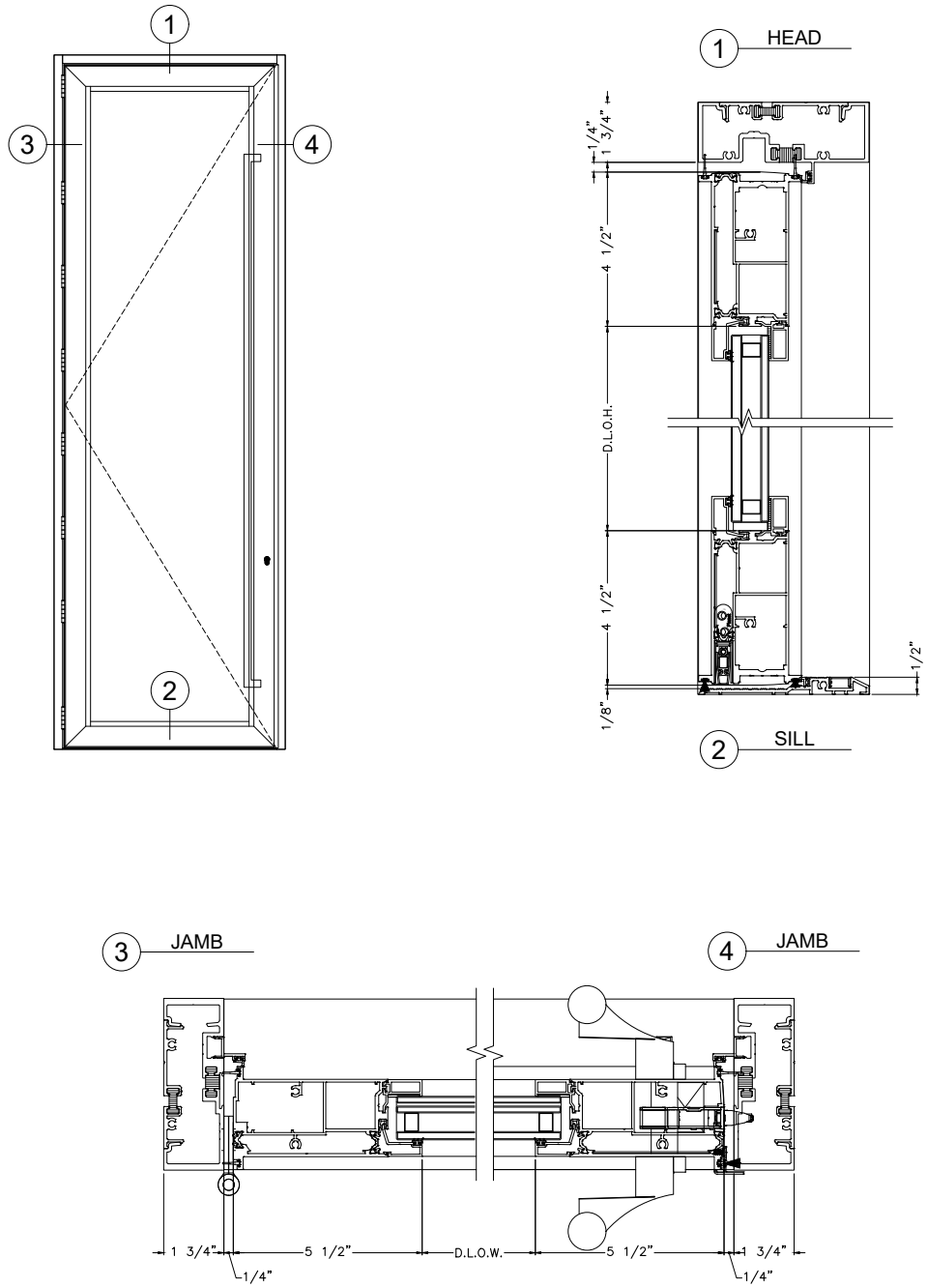


Single

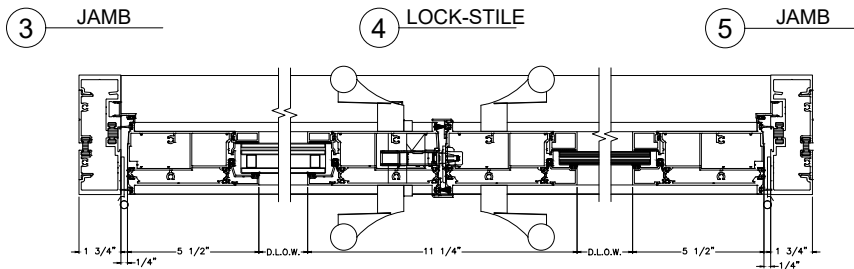
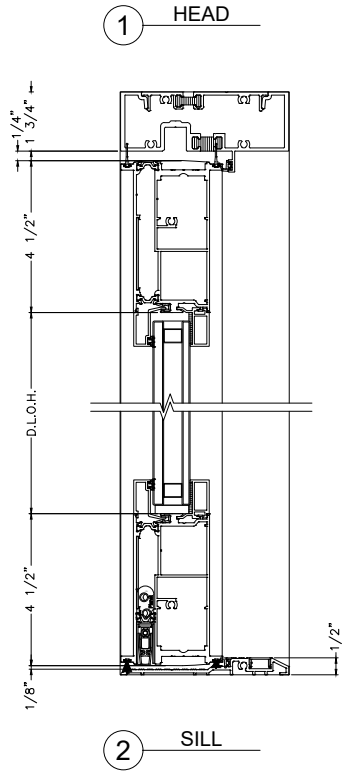
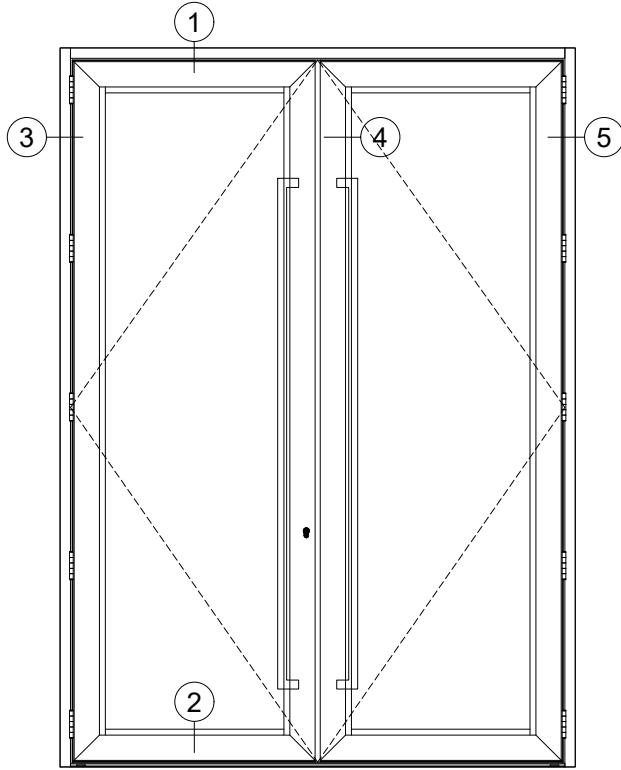
Available finishes



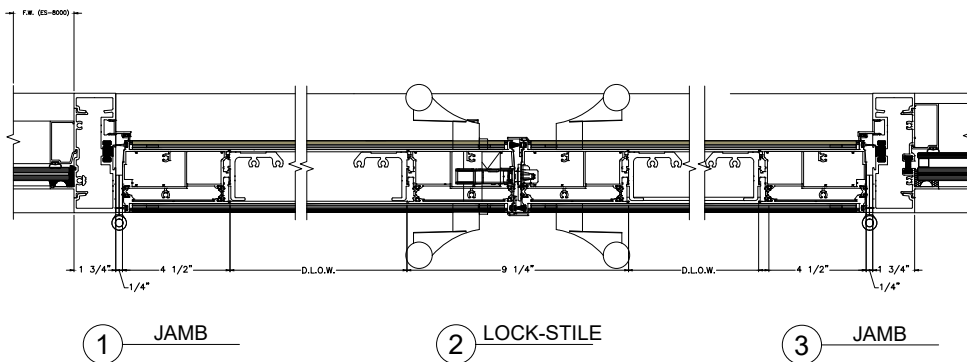
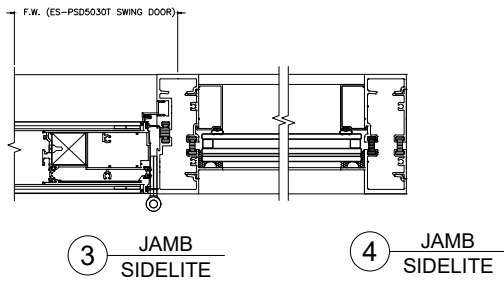
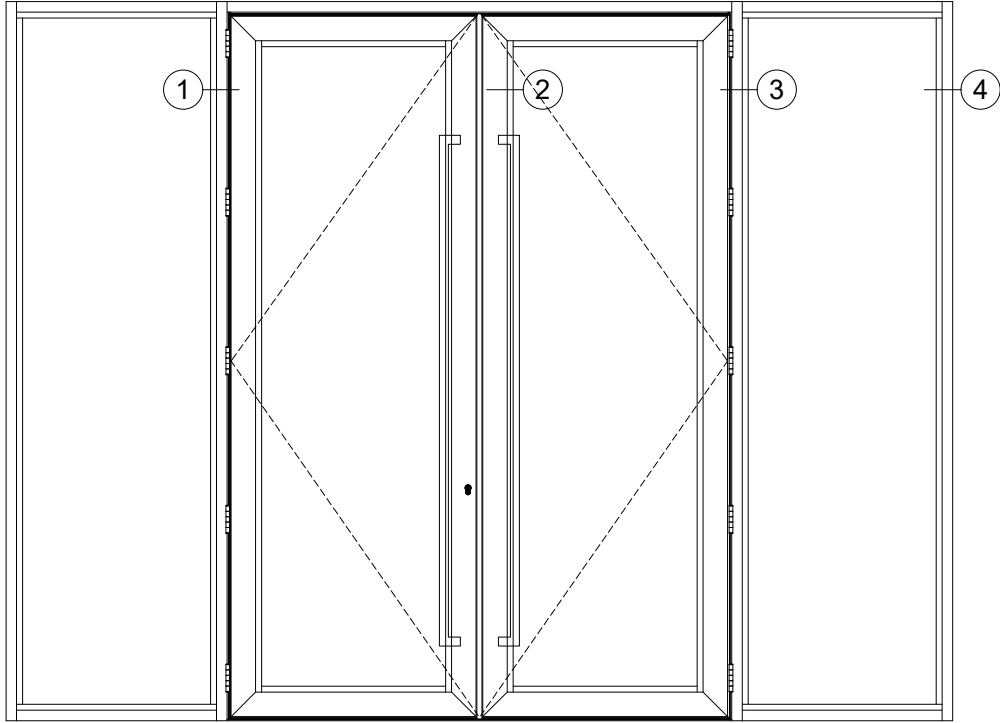
System details



System details

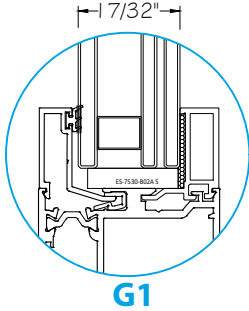


System details

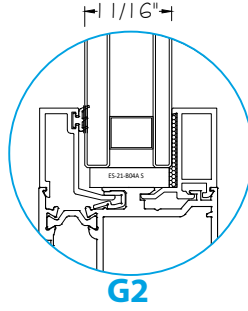


Glass options

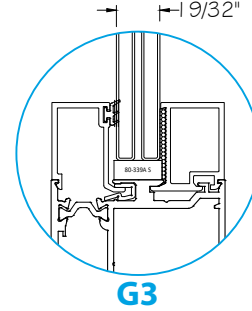
INSULATED LAMINATED GLASS



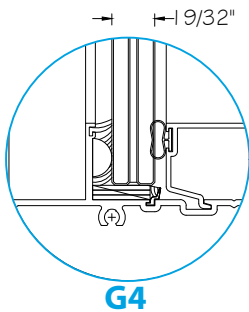
INSULATED GLASS



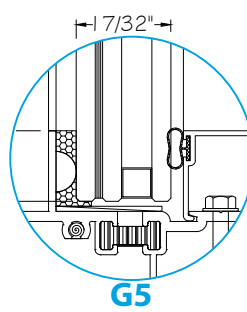
LAMINATED GLASS



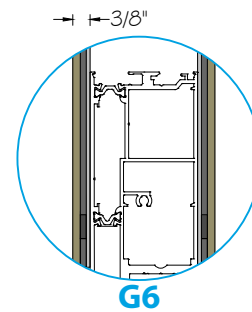
LAMINATED GLASS



INSULATED LAMINATED GLASS



PHENOLIC PANEL



G1: 1/4" TEMP. GLASS + 1/2" SPACER + 3/16" CLEAR HS GLASS + 0.090" SGP + 3/16" CLEAR HS GLASS.

G2: 5/16" CLEAR HS GLASS + 1/2" SPACER + 1/4" CLEAR HS GLASS.

G3: 1/4" CLEAR HS GLASS + 0.090" SGP + 1/4" CLEAR HS GLASS.

G4: 1/4" CLEAR HS GLASS + 0.090 INTERLAYER SENTRYGLASS + 1/4" CLEAR HS GLASS.

G5: 1/4" HS. GLASS + 0.090" INTERLAYER TROSIFOL PVB + 1/4" HS. GLASS + 3/8" SPACER + 1/4" TEMP. GLASS.

G6: 0.16" PHENOLIC PANEL + 1/8" SEALANT + 0.078" ALUMINUM SHEET.

GLASS FINISH: PAINTED, SERIGRAPHY & DIGITAL PRINTED.

For more information please contact TECNOGLASS® or visit www.tecnoglass.com.

Aluminum

ALLOY 6063-T6
ALLOY 6005-T5

For further information about aluminum and finishes, consult ALUTIONS®.

Measurements

Maximum size (Pivot door):

- 72" Width x 120" Height.
- 60" Width x 144" Height.
- 90" Width x 96" Height (Phenolic panel).

Maximum size (French door):

- 48" Width x 120" Height. (single).
- 86" Width x 120" Height. (Double).

Sealant

APPROVED SILICONE SEALS:

WEATHERPROOFING SILICONE:

Used to seal profile unions to avoid air and water infiltration.

STRUCTURAL SILICONE:

Besides acting as a sealant it capable to support high loads. This silicone is commonly used to support the glass in facades and hurricane resistant products.

Certifications might not consider every configuration. Tests values correspond to the highest values obtained for some configurations; they can vary and may not apply to all. **VERIFY APPROVAL FOR EACH SPECIFIC CONFIGURATION.**