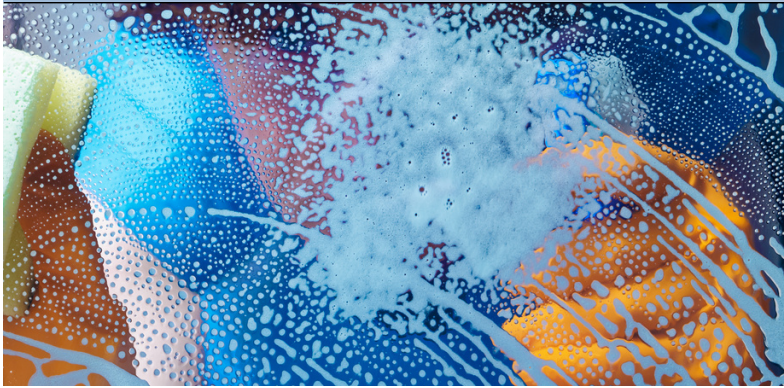
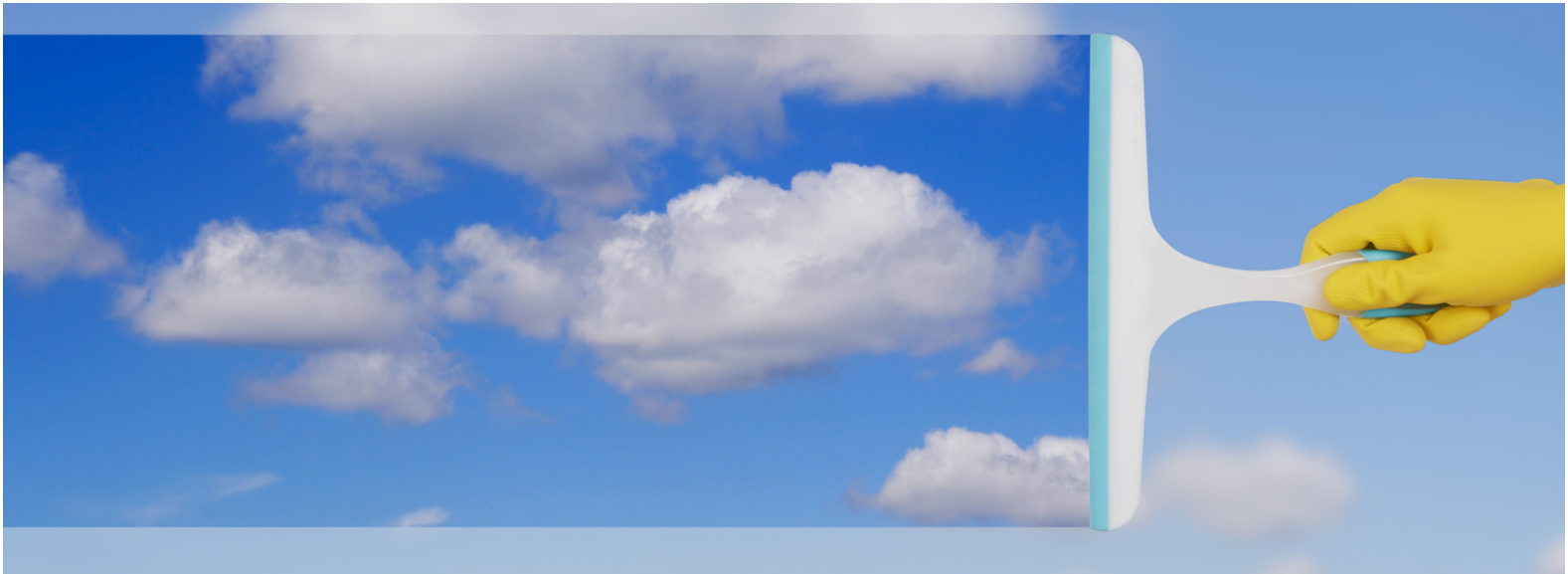


# ARDICON GROUP'S CARE & MAINTENANCE



## Ardicon Cares!

Ardicon Group doesn't just come and install. We want to ensure that you're left informed about proper care and maintenance so that your products perform at their optimum levels for the long run. Regular inspections and attention will help extend the longevity of your windows and doors, prevent costly repairs, and protect you from voiding your product's manufacturer's warranty.

In this guide we will outline best practices as well as what to avoid.

### *Cleaning Glass*

1. Begin by rinsing your glass with clean water to remove dirt and dust particles that can cause scratches during the cleaning process. As mentioned in *important precautions*, avoid using a power washer or garden hose.

2. Apply a soft, water-saturated cloth or a pre-mixed glass cleaner to the surface.



### *Cleaning Glass, continued...*

3. If you prefer a pre-mixed glass cleaner, follow the printed instructions carefully. Rinse and dry any run-down quickly to prevent the cleaning solution from leaving a residue on your glass.

4. Rinse your glass thoroughly with clean water to prevent the cleaning solution from leaving a film on your glass. As stated in *important precautions*, avoid using a power washer or garden hose.



### *Cleaning Your Frames*

1. Begin by rinsing your frames with clean water to remove dirt and dust particles that can cause scratches during the cleaning process. As mentioned in important precautions, avoid using a power washer or garden hose.
2. Clean the interior and exterior of your window or door frames with a mixture of mild soap and water. To ensure a safe application, test your cleaning solution on a small area before you apply it to the entire surface.
3. Apply a light, car-wax solution to your frames once a year. Make sure to apply the wax after you have cleaned the frames. Otherwise, the wax may seal salt spray deposits to the frames, allowing corrosion to occur.



### **GLASS CLEANING TIPS**

*For the best results, clean your glass during cooler temperatures without direct sunlight.*

*Wash your glass frequently to remove surface dirt and prevent stains.*

### *Cleaning Your Screens*

- Remove your screen carefully and place it on a clean, flat surface.
2. Use a soft brush with a combination of mild soap and water to gently remove dirt, salt, and other deposits. As noted in important precautions, refrain from using objects that may cause punctures or tears.
  3. Once your screen is completely dry, reinstall it gently.

### *Hardware & Tracks*

The wheels on your sliding glass door(s) do not need lubrication since they contain a sealed ball bearing housing.

A light oil lubricant, like mineral oil, or a light plant-based oil, like hemp, olive, or grapeseed, may be used to preserve easy operation on hinges, thumb turns, and other moving parts.

Please inspect and clean your weatherstrip with a damp cloth or a mixture of mild soap and water. Rinse and dry the weatherstrip thoroughly. If your weatherstrip is damaged, replace it promptly to ensure a proper seal.

Routinely inspect and clean your water drainage (weep systems) to maintain proper drainage.

Wipe your tracks and sills with a damp cloth or use a vacuum to remove dust and dirt.

### *Additional Cleaning Tips*

- Wash your products with light pressure—excessive scrubbing can lead to damage, like scratches.
- Clean and rinse each window or door individually to prevent cleaning agents from permeating for long periods of time.
- Clean aluminum frames very carefully after they are installed. These frames are extremely susceptible to corrosion caused by various chemicals on a construction site.
- Avoid leaning on your window or door screens. These products are not designed to protect you from falling.

**Would you like to learn more?** Please visit our dedicated Customer Portal.



[www.ardicongroup.com/cp](http://www.ardicongroup.com/cp)

### *Important Precautions*

Do not use the items below on your windows, screens, doors, or hardware.

These improper tools may void your warranty and/or damage your products.

- A power washer or garden hose,
- Metal tools or sharp objects, like razor blades, putty knives, and abrasive pads,
- Petroleum-based products, abrasive or caustic cleaners/solvents, and hydrochloric/phosphoric acid.