

# FOLDING DOOR

www.eswindows.com

ES-BF5010T



## System Description

- Large missile impact and small missile impact.
  - Frame depth: 5".
  - Frame sight line: 2"
  - Sill height: 2 1/2".
- (Certifications might not consider every configuration).

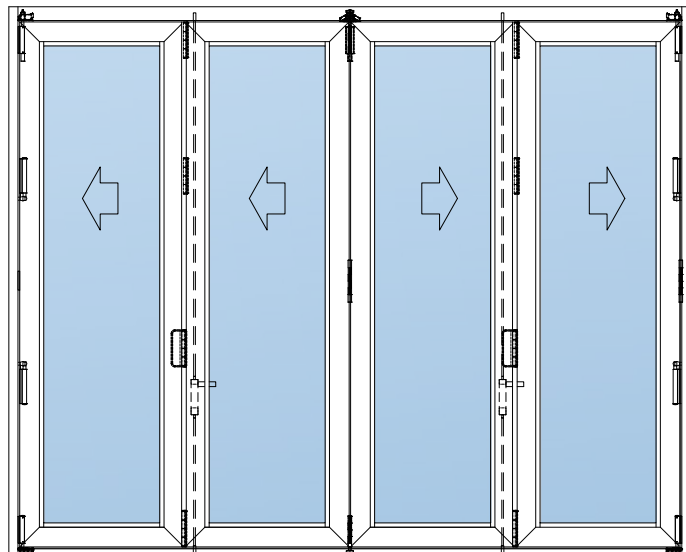
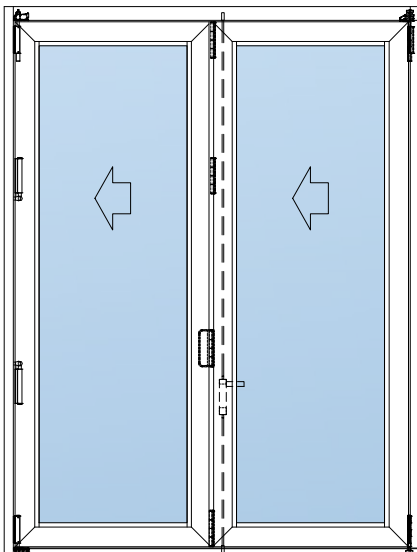
## Features

- Heavy duty hardware including pivots, hinges, and carriers.
- Thermally broken system.
- ADA sill.
- Multipoint lock.

## Test

- Air infiltration: 6.24 psf
  - Water infiltration: 15 psf
  - Design load: +/- 95 psf
- This data corresponds to the highest values obtained for some configurations. It can vary and may not apply to all.

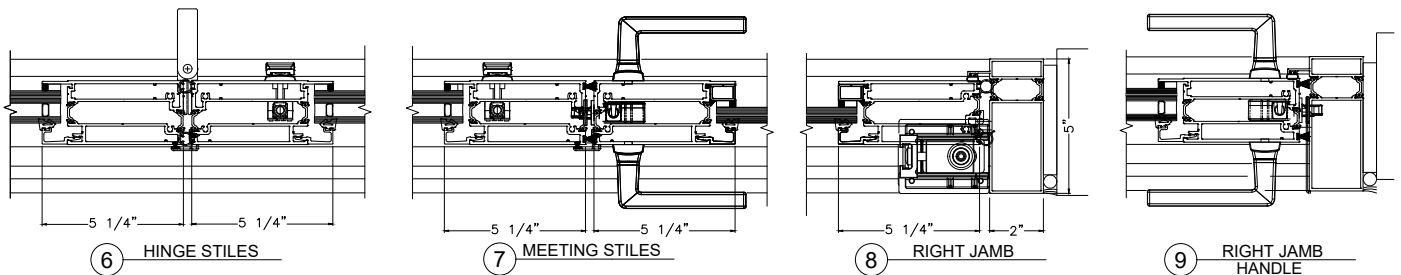
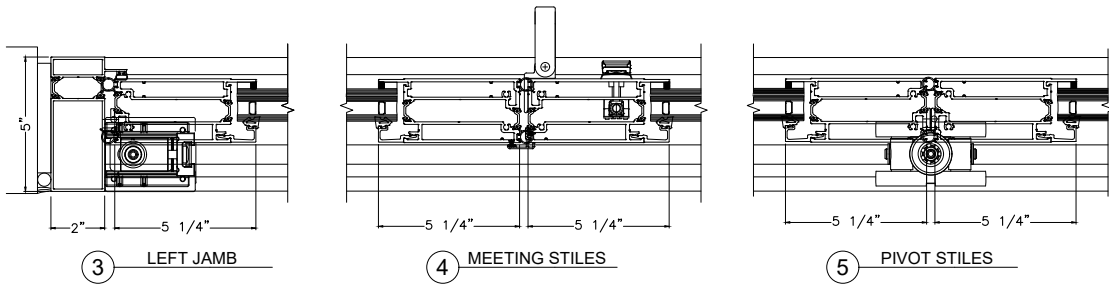
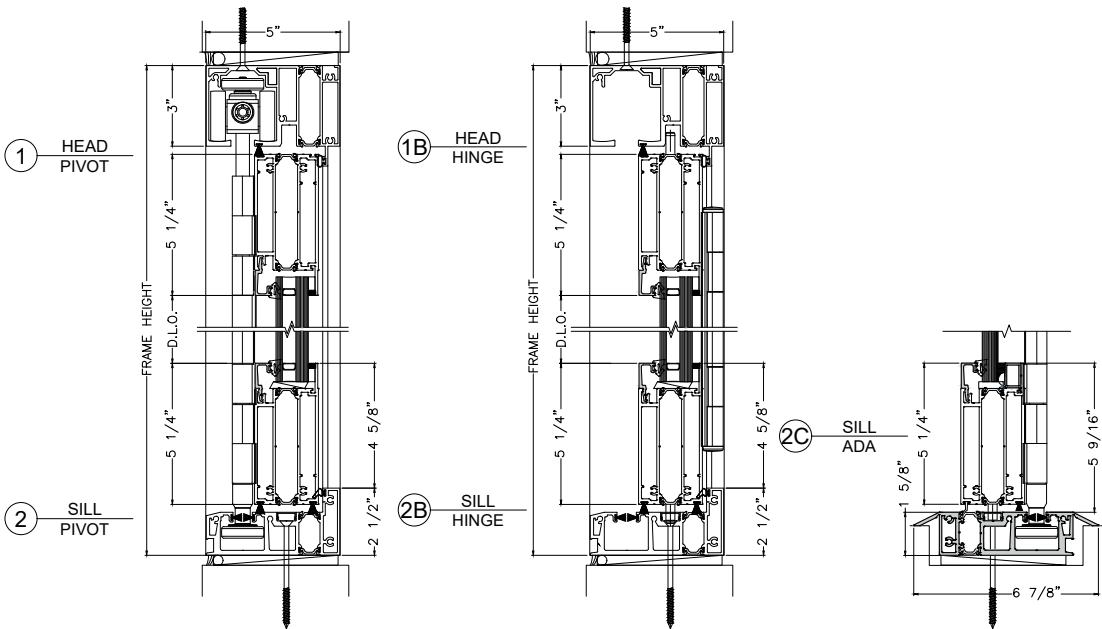
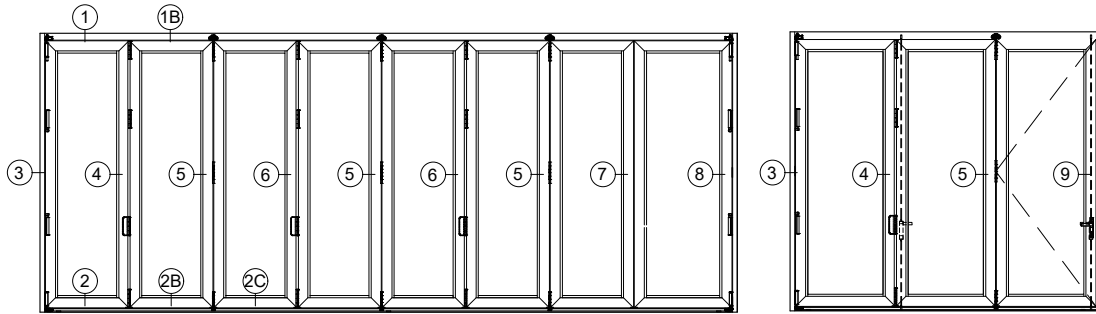
## Configurations



# Configurations

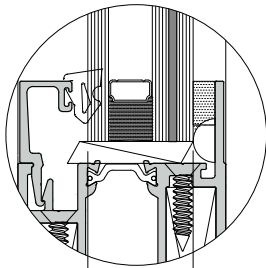
2L		2R	
2L1R		1L2R	
3L		3R	
3L1R		1L3R	
4L		2L2R	
4L1R		1L4R	
3L2R		4R	
5L		2L3R	
3L3R		5R	
7L		3L4R	
4L3R		7R	
5L2R		2L5R	
5L3R		8R	

System details



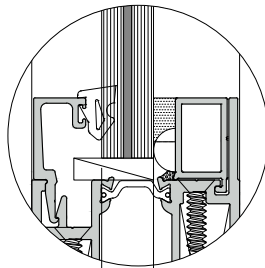
## Glazing options

### Insulating laminated glass



1 3/16"

### Laminated glass



19/32"

#### Designed for 1 3/16" Insulating laminated glass

- Small missile impact: 1/4" Heat Strean'd + 1/2" air spacer + 3/16" Heat Strean'd + 0.060 PVB + 3/16" Heat Strean'd.
- Large missile impact: 1/4" Heat Strean'd + 1/2" air spacer + 3/16" Heat Strean'd + 0.090 SGP + 3/16" Heat Strean'd.

#### Designed for 19/32" Laminated Glass

- Small missile impact: 1/4" Heat Strean'd + 0.060 PVB + 1/4" Heat Strean'd.
- Large missile impact: 1/4" Heat Strean'd + 0.090 SGP + 1/4" Heat Strean'd.

GLASS FINISH: PAINTED, SERIGRAPHY, DIGITAL PRINTED

For more information please contact TECNOGLASS® or visit [www.tecnoglass.com](http://www.tecnoglass.com)

### Aluminum

ALLOY 6063-T6  
ALLOY 6005-T5

For more information about aluminum and finishes consult ALUTIONS®.

### Sealant

APPROVED SILICONE SEALS:

WEATHERPROOFING SILICONE:

Used to seal profile unions to avoid air and water infiltration.

- Dowsill 791 (Black-White)

STRUCTURAL SILICONE:

Besides acting as a sealant it is capable to support high loads. This silicone is commonly used to support the glass in facades and hurricane resistant products.

- Dowsill 983
- Dowsill 995

### Measurements

Maximum tested sizes:

Width: 42"  
Height: 120"

Certifications might not consider every configuration. Tests values correspond to the highest values obtained for some configurations; they can vary and may not apply to all. **VERIFY APPROVAL FOR EACH SPECIFIC CONFIGURATION.**